

Our Vision

KTH as a leading university in Computational Science and Engineering (CSE)



KTH Computational
Science and
Engineering Centre

KCSE is established to realize this vision

KCSE

Workshops/Seminars

Graduate Program

Multidisciplinary Research

Industrial Focal Point

HPC

KCSE realizes the vision by

- Graduate program
 - Educate students to obtain a dual expertise in scientific computing and applications
- Multidisciplinary research
 - Stimulate cooperative research projects between the departments involved in KCSE
- High Performance Computing (HPC)
 - Strengthening the computational infrastructure in collaboration with PDC
- Workshops and seminars
 - Widening and strengthening the network of computational scientists
- Industrial focal point
 - Facilitate the dialogue between industry and KTH within CSE



KTH Computational
Science and
Engineering Centre

What is CSE ?

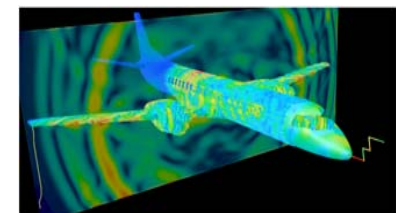
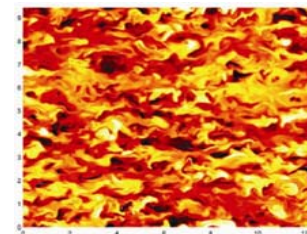
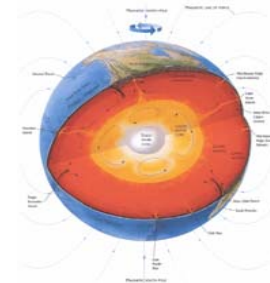
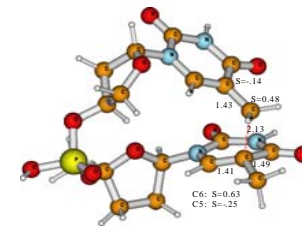
use of computer simulations to obtain new knowledge

Examples of CSE-activities at KCSE



KTH Computational
Science and
Engineering Centre

- *Life Science*
 - Simulation of biological structures
- *Materials Science*
 - Simulation of iron structure in earth core
- *Fluid Systems*
 - Turbulence simulations
- *Engineering Design and Optimization*
 - Simulation of lightning strike



KTH Computational Science and Engineering Centre



KTH Computational
Science and
Engineering Centre

- Mechanics
Dan Henningson, *Director*
Anders Eriksson, *Board*
- NADA
Björn Engquist, *Chairman*
Olof Runborg, *Deputy Director*
Per Öster, *Board*
- Aeronautical and Vehicle Eng.
Gunilla Efraimsson, *Deputy Director*
Art Rizzi, *Board*
- Materials Science and Eng.
Börje Johansson, *Vice chairman*
Anna Delin, *Director of Studies*
- Biotechnology
Hans Ågren, *Board*

